

BISAZZA

MOSAICO

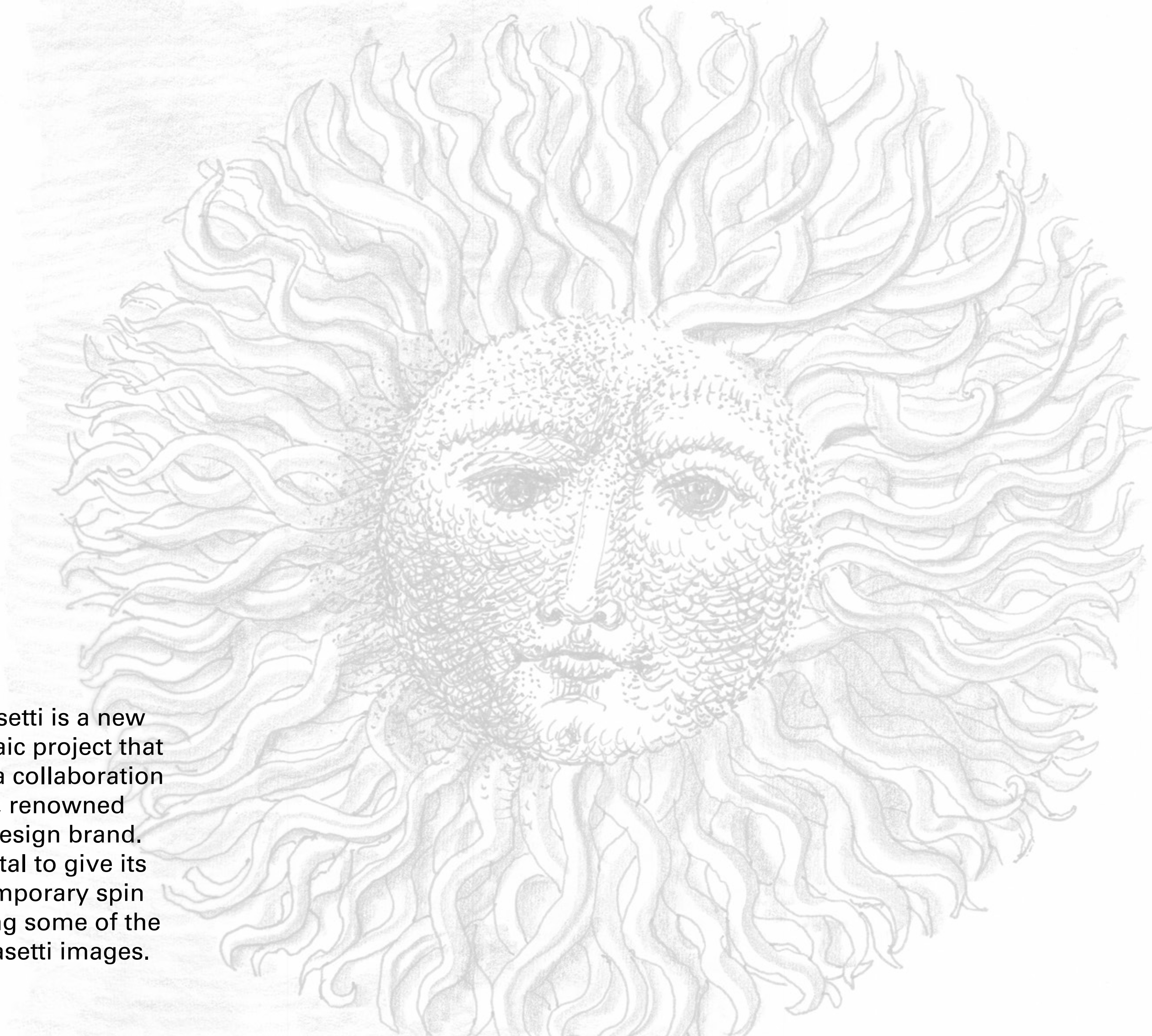


COLLEZIONE

FORNASETTI



Collezione Fornasetti is a new Bisazza glass mosaic project that has evolved from a collaboration with Fornasetti, renowned postwar Italian design brand. Bisazza goes digital to give its mosaics a contemporary spin when reinterpreting some of the most iconic Fornasetti images.





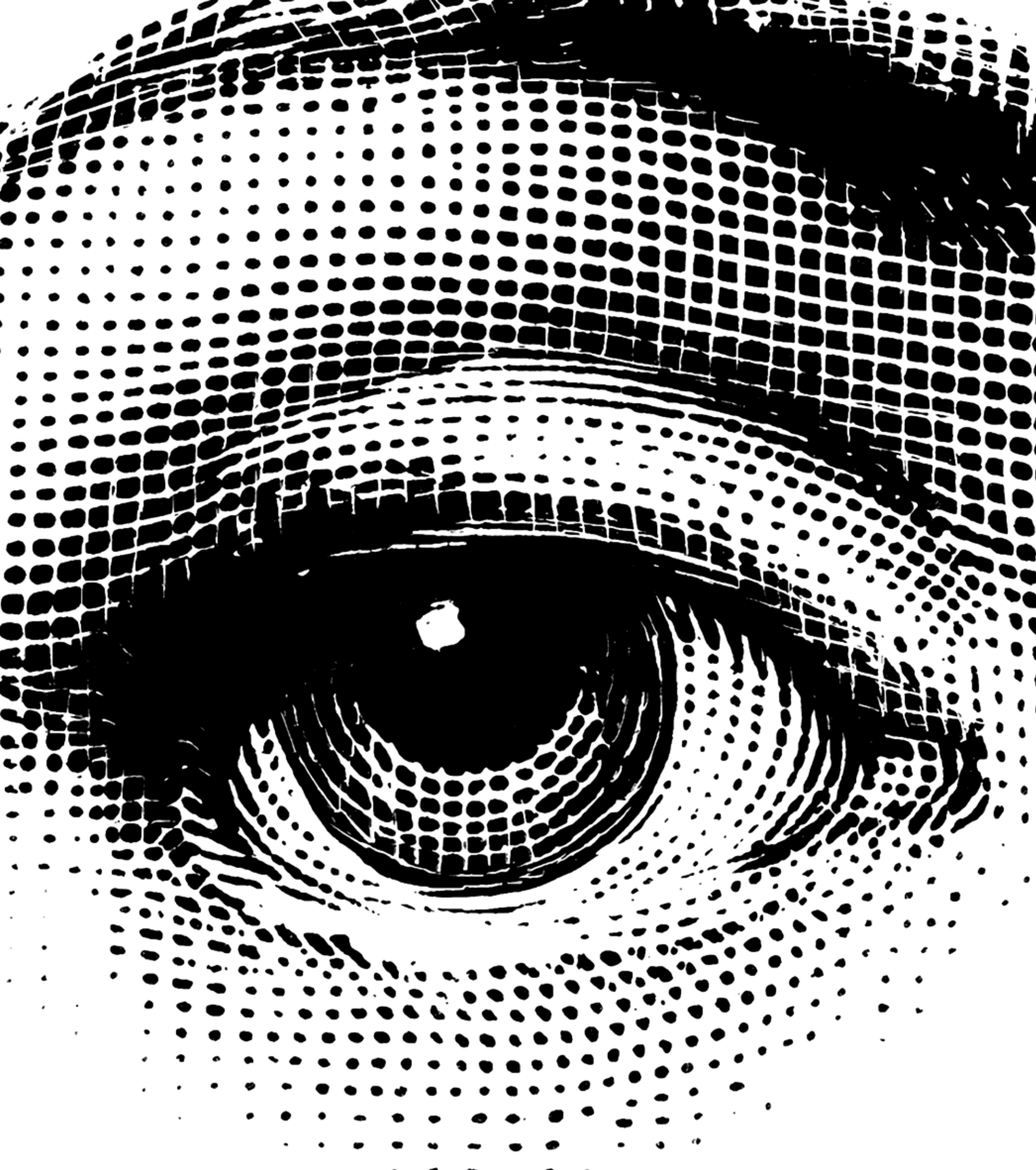
BOCCA

The red mouth is one of the recent motives penned by Fornasetti: a trace of India ink and some lipstick for an enigmatic smile.

The mosaic interpretation dismantles and reassembles the subject in wave after wave of white, black and red glass and enamel mosaic.







SERRATURA

In this wry and seductive decoration, set against an opulent red background, the mysterious glance of the Fornasetti muse, Lina Cavalieri, peers through the keyhole of an imaginary door.

Using only three different colours, more than 10,000 Bisazza tiny glass mosaic tiles were used.

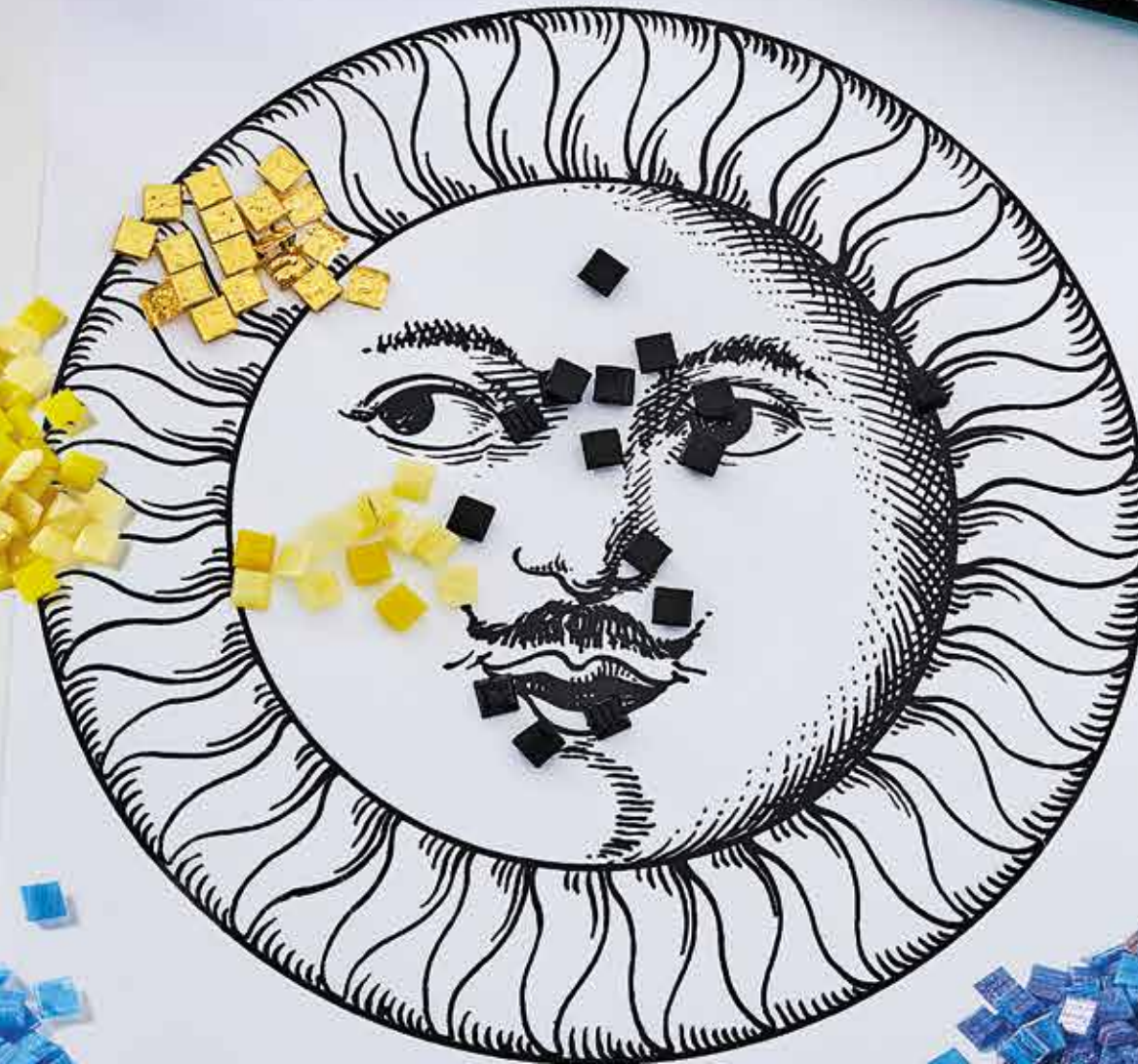
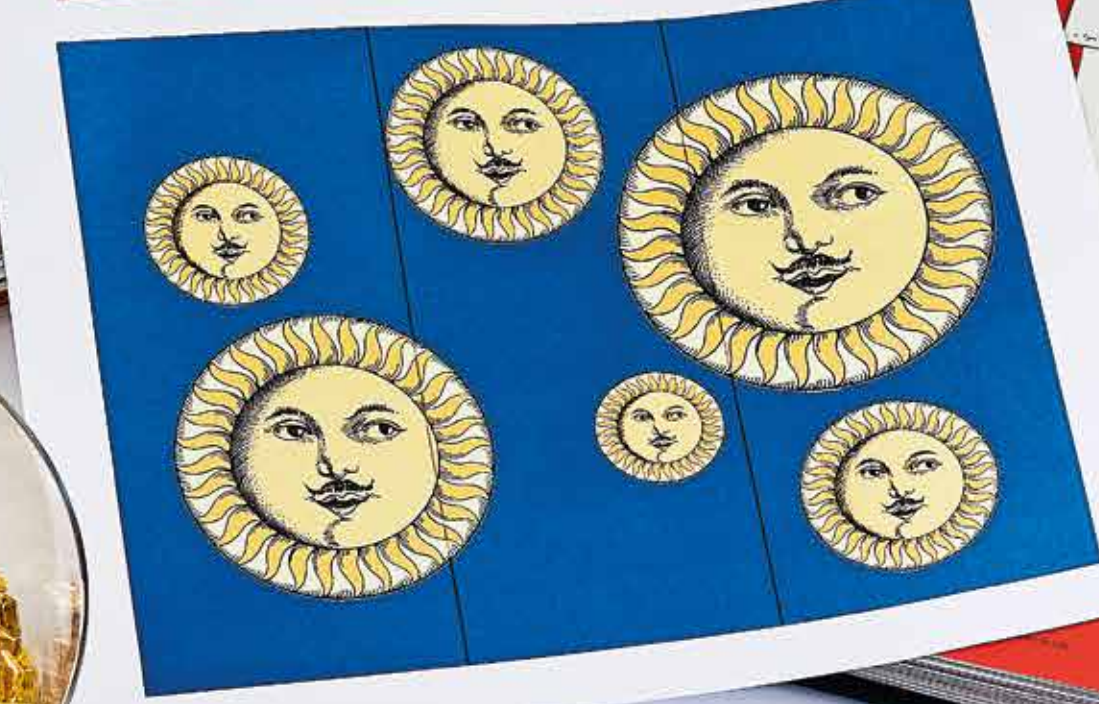




“People increasingly need decoration, because it has the same function as music: it may not seem absolutely necessary but it is. It’s food for the soul.”

Barnaba Fornasetti







SOLI A CAPRI

The sun is another favoured subject for Piero Fornasetti: surrounded by rays and subtle humor, the imaginary face is none other than a tongue-in-cheek self-portrait.

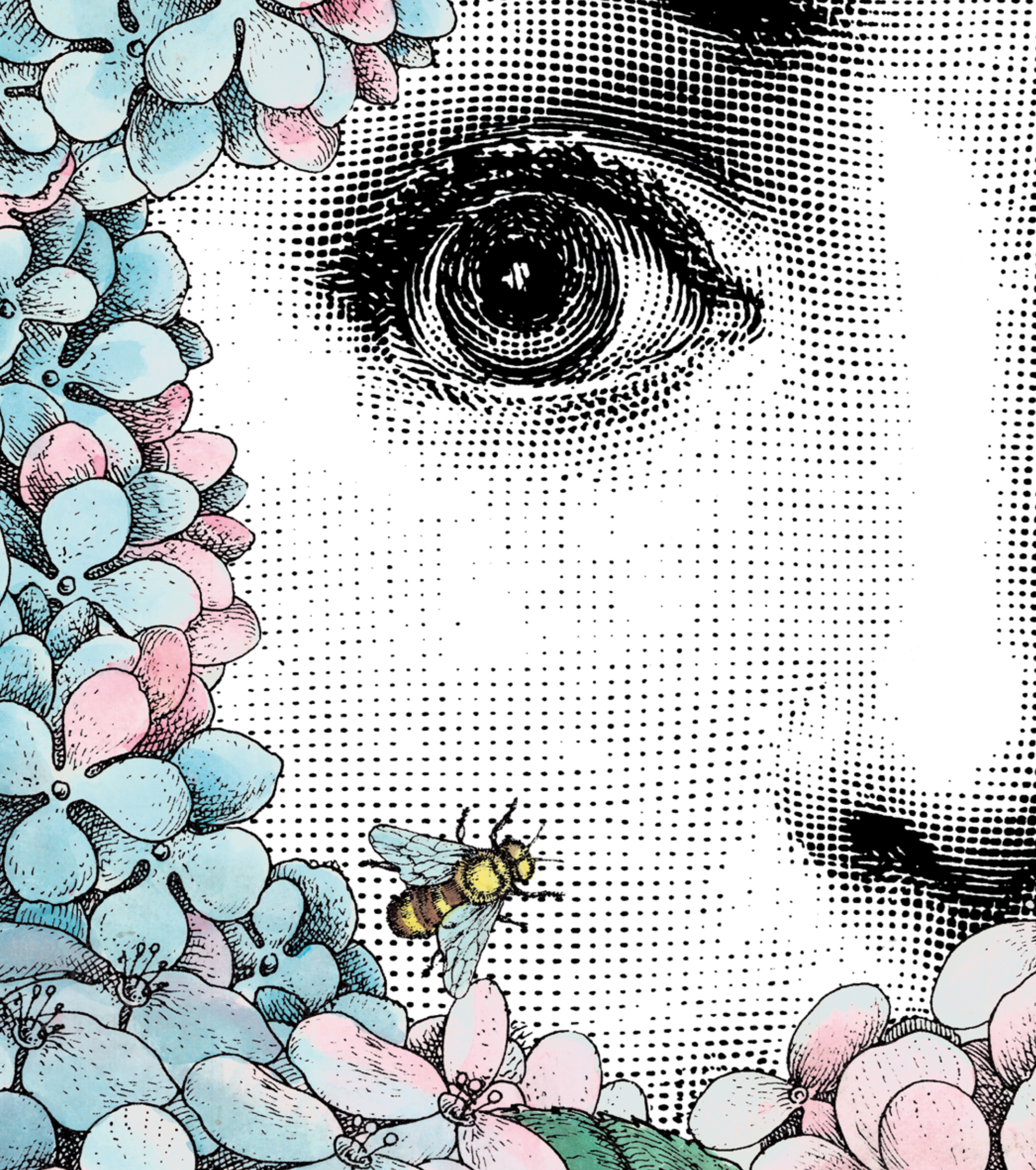
24kt gold and various shades of glass and enamel mosaic were used to create this digital interpretation.

The decoration is available in two colour combinations: one with a background of blues that recall the Capri sea and sky, and one in a more restrained, sophisticated grey.









ORTENSIA

The classic beauty of the idealized face of Lina Cavalieri - a popular Belle Époque opera singer-turned Fornasetti muse - returns with Ortensia.

Bisazza uses the digital mosaic technique to reinterpret the neo-romantic atmosphere of the subject. The enigmatic face is crafted in monochrome then beautifully framed with petals using twenty-five pastel coloured mosaic tiles.



Decorations created with glass,
smalto and 24kt gold
10 x 10 mm mosaic tiles



Soli a Capri Blu

5.16 x 2.90 m



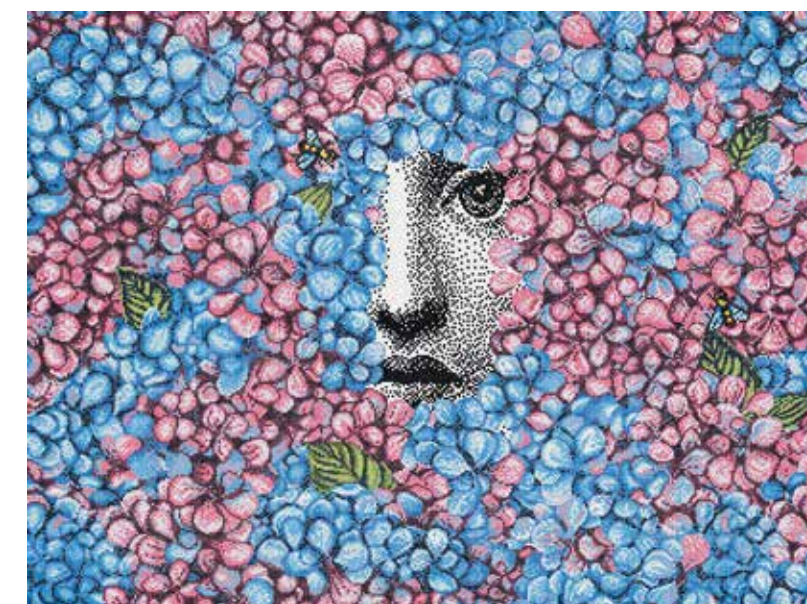
Soli a Capri Grigio

5.16 x 2.90 m



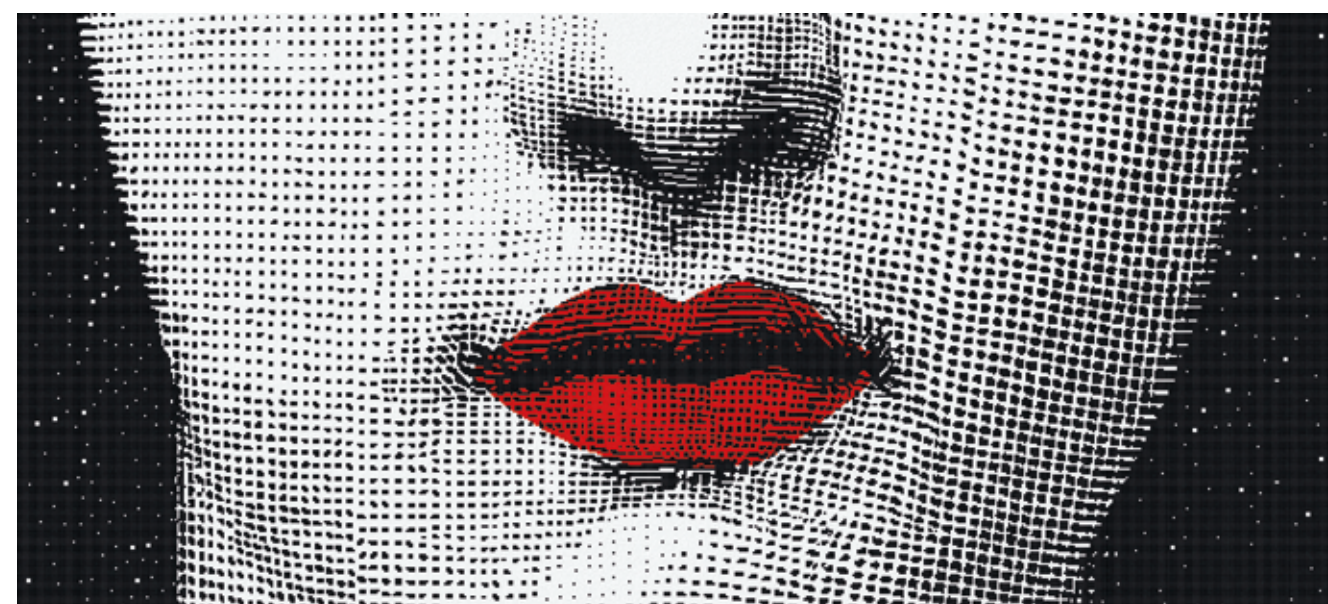
Serratura

1.29 x 2.90 m



Ortensia

3.87 x 2.90 m



Bocca

6.46 x 2.90 m

